

Precision meets performance with the G20 Pro  
GNSS Receiver, designed to elevate your surveying experience.

INTRODUCING

# G20

## GNSS RECEIVER

*Redefining Accuracy,  
Elevating Precision*



**GF GEOFUSION**

# G20 GNSS RECEIVER

Introducing the G20 Pro GNSS Receiver, the latest innovation from GEOFUSION. Designed for precision, durability, and advanced connectivity, the G20 Pro is ideal for professionals seeking high-performance solutions in surveying, construction, and geospatial industries. With enhanced satellite tracking and fast signal acquisition, the G20 ensures accurate measurements in even the most challenging environments.

Multi constellation and frequency tracking always guarantee a fixed solution for your job. LCD display screen can make your operation faster and easier. G20Pro built-in 5W radio allows users to have a longer working distance, up to 16KM in open areas, The durable IP68 design makes it possible to work in extreme environments.



## CHARACTERISTIC

### Linux intelligent system

Qualcomm Cortex-A7 + Linux, the intelligent system platform, brings efficient computing and unlimited expansion of product functions to users.

### Adjustable power

G20Pro has internal radio of adjustable power of 1W to 5W, and works as base station at 5W power. The transmission distance can reach to maximum 16KM when working in the open area.

### Combined antenna

The new four in one antenna integrates GNSS, WIFI, Bluetooth and 4G, with smaller volume and better signal.

### Long endurance

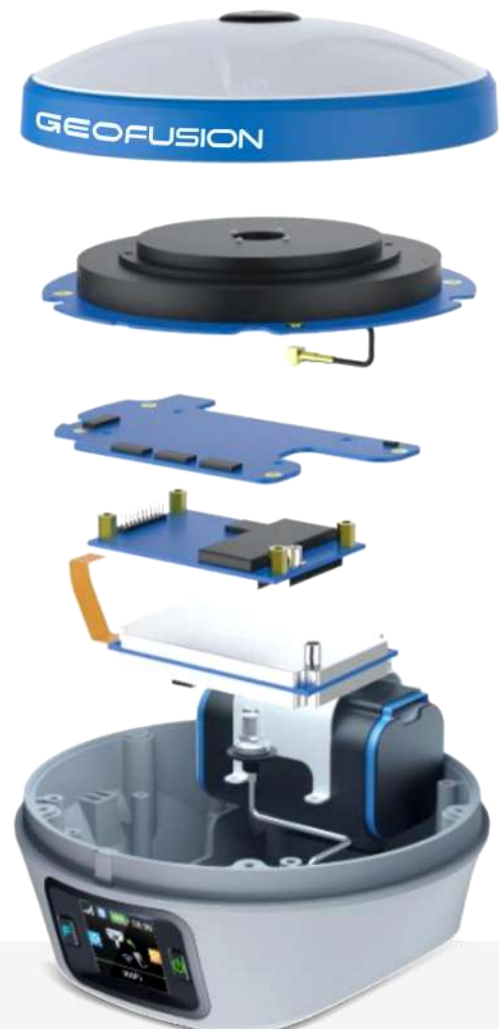
Built in high-capacity lithium battery ensures continuous working time of more than 18 hours under normal operation.

### IP68 Design

Industrial design, solid magnesium alloy shell, in line with IP68 design requirements, safe and reliable.

### Multi constellation

With its 1408 channels, G20Pro provides an excellent on board real time navigation solution with high accuracy. All GNSS signals (GPS, GLONASS, BDS, GALILEO, QZSS and SBAS) are included.



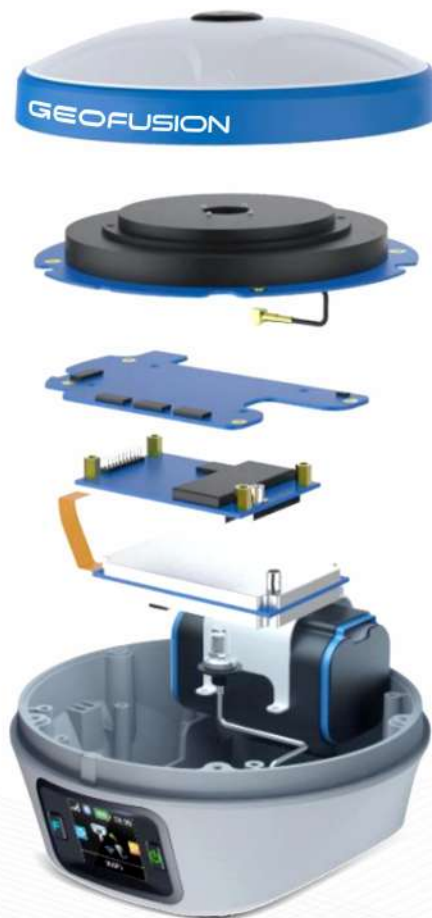
ITEM		SPECIFICATION	REMARKS
HARDWARE SYSTEM		ARM Cortex-A7 1.8GHz	
OS		LINUX	
GNSS	GPS	L1C/A, L1C, L2P(Y), L2C, L5	
	GLONASS	L1, L2, L3	
	BDS	B1I, B2I, B3I, B1C, B2a, B2b	PPP-B2b, PPP-E6,
	GALILEO	E1, E5a, E5b, E6	SBAS supported
	QZSS	L1, L2, L5	
	SBAS	L1	
	NavIC (IRNSS)*	L5*	IRNSS supported
	Channel	1408	
	Data format	NMEA-0183	
	Correction I / O Protocol	RTCM3.X	
	Data update frequency	20Hz(max)	
	Recapture Time	<1s	
	Cold Boot	<40s	
POSITIONING ACCURACY	Single (RMS)	Horizontal: 1.5m    Vertical: 2.5m	
	DGPS(RMS)	Horizontal: 0.4m    Vertical: 0.8m	
	RTK(RMS)	Horizontal: $\pm(8\text{mm}+1\text{ppm})$ Vertical: $\pm(15\text{mm}+1\text{ppm})$	
	Time Accuracy (RMS)	20ns	
	Static Accuracy (RMS)	Horizontal: $\pm(2.5\text{mm}+0.5\text{ppm})$ Vertical: $\pm(5\text{mm}+0.5\text{ppm})$	
	Speed Accuracy (RMS)	0.03m/s	
	Tilt compensation Accuracy(within 60°)	$\leq 2\text{cm}$	
SYSTEM	Bluetooth	BR+EDR+BLE	
	WIFI	802.11 b/g/n	
	Network	LTE FDD: B1/2/3/4/5/7/8/12/13/18/19/20/25/26/28 LTE TDD: B38/39/40/41 WCDMA: B1/2/4/5/6/8/19 GSM: B2/3/5/8	
	Data Radio	Frequency: 410~470MHz Protocol: TRIMTALK, TRIMMK3, SOUTH, TRANSEOT RF transmit power: 1W/2W/5W Air baud rate: 9600 / 19200bps	
	Storage	32GB Storage	
DISPLAY	LCD	Screen size: 1.3inch Display mode: TFT Display format: 240*RGB*240 View Angle: FULL	
BATTERY	Battery	7.4V, 9600mAh	
	Work time	More than 18 hours (Typical, Rover, GSM)	The static working mode supports continuous data collection for 26 hours under full power

	Charge	USB PD 15V/2A 5V/3A	Support fast charging adapter and adaptively and dynamically adjust charging current
ENVIRONMENTAL	Work Temperature	-20°C ~ +60°C	
	Storage Temperature	-40°C ~ +85°C	
	Shock	Withstand 1.5M pole drop	
	Protection	I P68	
PHYSICAL	Material	Magnesium alloy main body, ABS/PC top cover	
	Dimension	143.5mm* 90.7mm	
	Weight	≤0.90kg	
A FULL SET	G20Pro Device	1 SET	
	U-SB power adapter	1 PCS	
	Type-C to Type-C	1 PCS	
	Radio Antenna	1 PCS	
CERTIFICATION	Regulatory Compliance	CE, FCC	

\* Manufacturers may update parameters at any time, please refer to the latest product information.

GF GEOFUSION

G20



© 2024 Copyright Aryan Hi-Tech Surveying Systems Pvt Ltd



**Aryan Hi-Tech**

*A promise to serve you **Better***



ARYAN HI - TECH SURVEYING SYSTEMS PVT LTD  
G1,484/485, Dal Mill Road, Uttam Nagar West,  
New Delhi, 110059, Delhi, India



Feel free to connect us 📞 971 635 4846

🌐 [www.geofusion.in](http://www.geofusion.in)